



CONTAINER TRADING LTD. CO.

## Technical Specification for MOBILBOX Room-Modules

### Generally:

The following description refers to the specification and furnishing of standard containers. MOBILBOX Room-Modules match ISO dimensions and have the advantages of this norm system. Construction is based on a stable frame and interchangeable wall panels. The individual containers can be stood either side-by-side or stacked on top of each other. Individual sizes of space can be achieved by removing outer wall panels and fitting of partitions.

### Standard measurements and weights of MOBILBOX Room-Modules:

Container Type	Internal dimensions (mm)			External dimensions (mm)			Weights (kg)
	Length	Width	Height	Length	Width	Height	
<b>MB 05</b>	1200	2238	2340	1400	2438	2591	620
<b>MB 08</b>	2235	2238	2340	2438	2438	2591	720
<b>MB 10</b>	2791	2238	2340	2991	2438	2591	1150
<b>MB 16</b>	4680	2238	2340	4880	2438	2591	1620
<b>MB 20</b>	5858	2238	2340	6058	2438	2591	1980
<b>MB 24</b>	7125	2238	2340	7325	2438	2591	2390
<b>MB 30</b>	8925	2238	2340	9125	2438	2591	2890

MOBILBOX Room-Modules can also be delivered in dimensions which are exactly adapted to the individual use or to the available space.





CONTAINER TRADING LTD. CO.

**SPECIFICATION DETAILS:**

**1) BASE:**

Frame-construction: Cold rolled, welded, 4 mm steel profile; 4 welded (container) corner castings with dimensions according with ISO norms.

Floor: 20 mm chipboard, water resistant (V100), free of formaldehyde (E1); 1,5 mm synthetic floor covering (flash point class B1 - difficult to burn, smoke density Q1), welded seams; water soluble adhesive, environment friendly.

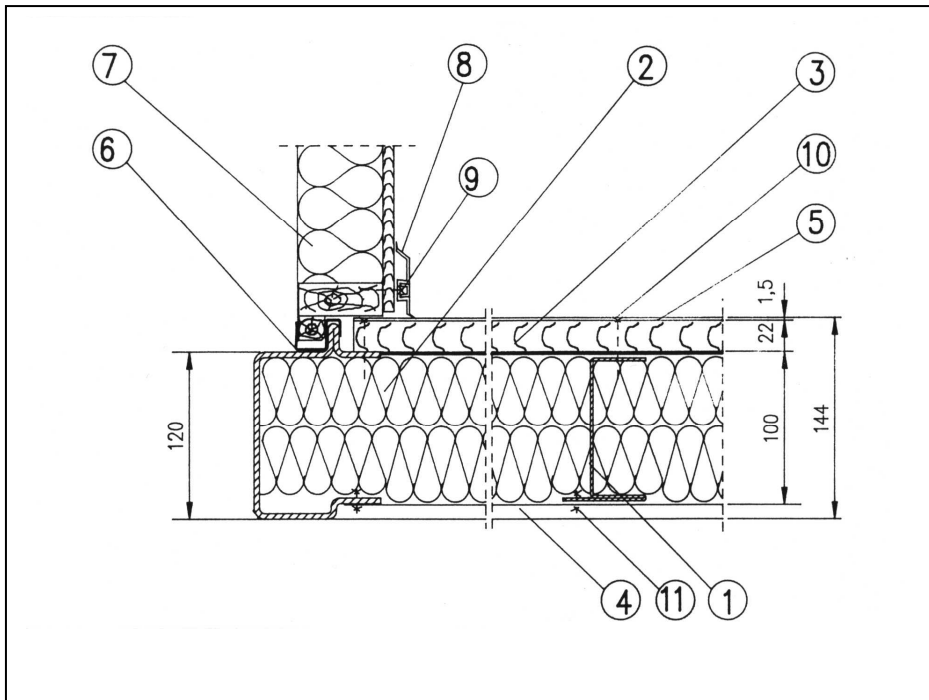
In sanitary containers, the synthetic floor covering is laid to floor and approx. 100 mm up each wall all seams being welded. Additional strengthening is provided in the area where the boiler is positioned.

Floor base: 0,5 mm galvanised sheet metal.

Load bearing capacity: 2,00 kN/m<sup>2</sup>, working load.

Insulation: 60 mm mineral-wool slabs (density 16 - 24 kg/m<sup>3</sup>; flash point class A - not flammable; smoke density class Q1-low smoke emission, in accordance with ÖNORM B 3800).

K-value: 0,45 W/m<sup>2</sup>K.



1	Floor – cross member	7	Insulation – mineral wool 60 mm
2	Insulation – mineral wool 60 – 100 mm	8	PVC – floor capping, two-piece
3	Chipboard 20 mm, V100, (E1)	9	Screw 4,0x20 mm
4	Sheet metal, galvanised, 0,5 mm	10	Chipboard screw 4,8x38 mm
5	PVC floor covering 1,5 mm, B1Q1	11	Screw 4,0x10 mm
6	Panel – covering profile, punched		





CONTAINER TRADING LTD. CO.

**2) ROOF:**

Frame construction: 3mm welded steel profile; 4 (welded) container castings, dimensions in accordance with ISO norms, wooden purlins.

CEE connection: Sunken in frontal roof frame

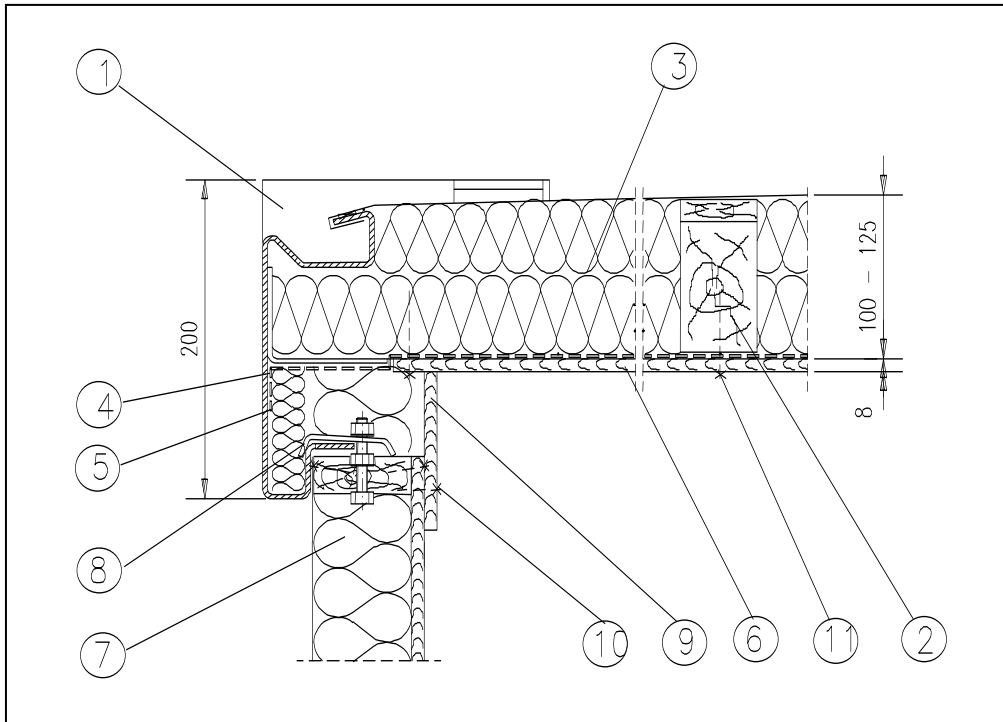
Roof covering: 0,6 mm galvanised sheet metal, double folded along whole container length

Load bearing capacity: 1,00 kN/m<sup>2</sup>

Roof covering/interior: 8 mm chipboard overlaid both sides; colour: white; V20 quality, free of formaldehyde (E1)

Insulation: 100 mm mineral-wool slabs (density 16 - 24 kg/m<sup>3</sup>). To avoid cold bridges, also the roof frame is insulated with mineral-wool slabs (density 16 - 24 kg/m<sup>3</sup>)

K-value: 0,32 W/m<sup>2</sup>K.



1	Frame profile with roof rail	8	Panel anchoring clip (upper part)
2	Wooden purlin	9	Panel anchoring clip (lower part)
3	Insulation - mineral wool 100 mm	10	Upper capping
4	Aluminium double scotch tape, 52 μm	11	Screw 4,0x20 mm
5	Vapour seal, aluminium foil, 50 μm	12	Screw 5,0x50 mm
6	Chip board, overlaid , 8 mm	13	Screw 4,0x20 mm
7	Insulation - mineral wool 60 mm		

ISO 9001



Tanúsított cég



CONTAINER TRADING LTD. CO.

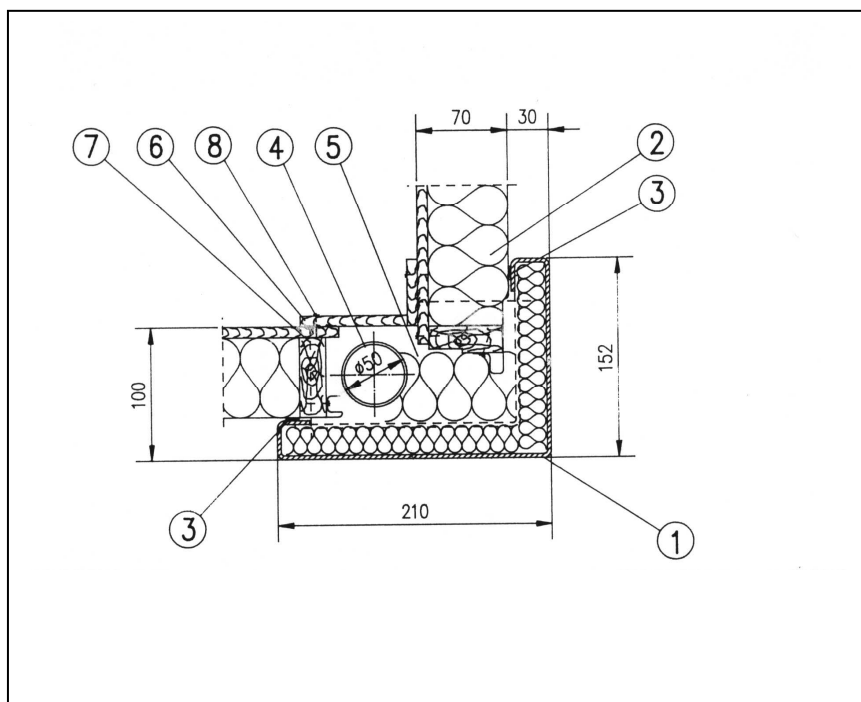
### 3) CORNER POSTS:

Profile: Cold rolled 3 mm steel profile, dimension 152/210 mm.

Fitting: The four corner posts are fitted with the base frame and the roof frame with a screwing. In this manner MOBILBOX Room- Modules are collapsible and can be transported in packages.

Drainage: Rainwater will be drained through four seamless PVC-down pipes which are fitted into the corner posts, Ø50 mm.

Insulation: To avoid cold bridges, the corner posts are insulated with mineral-wool slabs (density 16 - 24 kg/m<sup>3</sup>)



1	Steel profile ST 53 – 3	5	Insulation, mineral wool
2	Insulation – mineral wool 60 mm	6	Edge capping, chipboard overlaid
3	Cellular rubber sealing 3x15 mm	7	Screw 6,0x90 mm
4	PVC down pipe , seamless, NW 50 mm	8	Screw 4,0x35 mm





CONTAINER TRADING LTD. CO.

**4) WALL PANELS:**

Exterior cladding: profiled galvanised sheet metal, PVC overlaid, 0,6 mm.

Interior cladding: 8 mm chipboard, overlaid; design: white or light oak. V20, free of formaldehyde (E1).

Insulation: 60 mm mineral wool slabs (density 16-24 kg/m<sup>3</sup>).

K-value: 0,55 W/m<sup>2</sup>K.

Options:

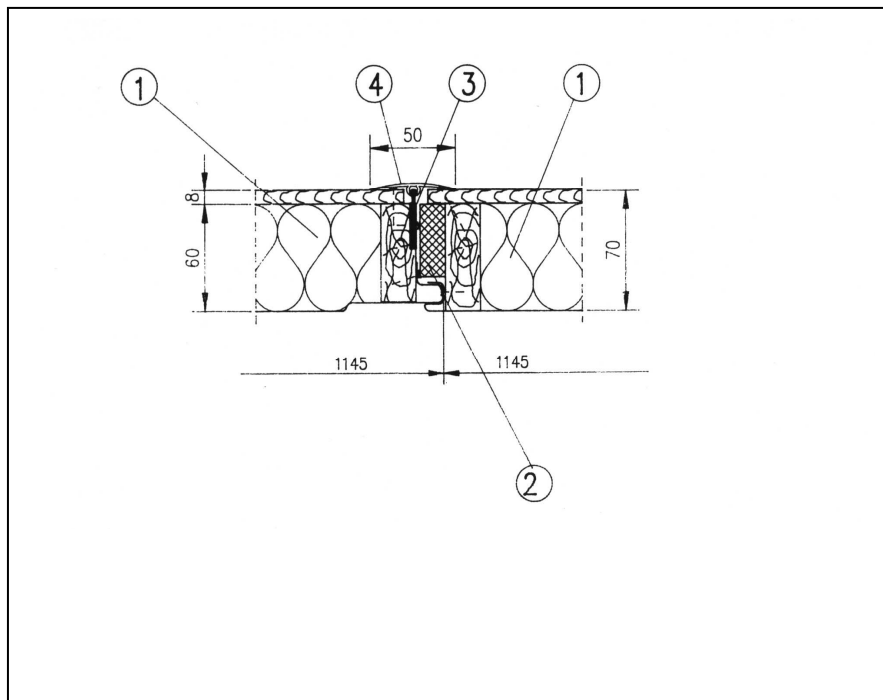
Full panel: width - 1145 mm

Door panel: with a fitted aluminium-door 875/2000 mm

Window panel: with a fitted PVC-window with rolled blind 945/1200 mm

Sanitary window panel: with a fitted PVC-window with a peep proofed unit 600/600 mm

Half panel: width - 573 mm



1	Insulation – mineral wool 60 mm	3	Wooden frame 35x60 mm
2	Cellular rubber sealing 15x50 mm	4	PVC - capping





## CONTAINER TRADING LTD. CO.

---

### 5) SURFACE PRESERVATION:

All steel profiles will be fully abrasive shot blasted and coated with a primer prior to assembling, all sheet metals will be hot-dipping zinc galvanised.

### 6) PAINTING/COATING:

Primer coating: Epoxy primer 20 my

Top coating: Vynilacryl 110 my

All zinc galvanised sheet metals are PVC overlaid in standard colours.

### 7) WINDOWS.

Standard window: PVC window frame, white, glazed with vacuum sealed unit. Single handed tilt and turn mechanism complete, plastic rolled blind with burglar-proof fixing and blind fastener.

Sanitary window: PVC window frame, white, glazed with vacuum sealed peep-proof unit. Single handed tilt mechanism and camouflage painting.

### 8) EXTERIOR DOORS:

Galvanised steel frame 875 x 2000 mm door on aluminium hinges, aluminium door leaf with 40 mm insulation; internal clearance: 810 x 2000 mm.

### 9) INTERIOR DOORS:

Veneered wooden door, can be hung to left or right opening door, 625 x 2000 mm, 750 x 2000 mm, 875 x 2000 mm.

### 10) PARTITION WALLS:

Frame: 60 mm environment-friendly impregnated wood

Veneer: 4 mm wood decor finish: white or light oak design.

### 11) ELECTRICAL INSTALLATION:

Electric cabling is concealed and in sanitary containers in moisture resistant specification. All parts supplying according to CEE-Norm (=Commission Electro technique European)

Technical data:

Voltage 220/380 V, 50 Hz

Exterior: Connection supplying according to CEE sunken in the roof frame, 5 pole/32A socket.

Interior: Wall-sockets, light switch, single battens with fluorescent lamps 1x58 W or 2x36 W.

Distribution enclosure with:

Residual current circuit breaker 40/4E-0,03 A

10 A circuit breaker (light)

16 A circuit breaker (electric heater)

16 A circuit breaker (wall-sockets)

Earthing:

1 galvanised strip iron earth electrode (25 x 4 mm ) with fastening.

it is the responsibility of the buyer/lessee to arrange for the earthing installation on site.

ISO 9001



DNV

Tanúsított cég



CONTAINER TRADING LTD. CO.

---

**12) PLUMBING:**

Cold water supply:

Polypropylene pipe fed through container wall, accumulator pressure 10 bar.

Hot water supply:

By electric boiler - size subject to container type: 5 l, 80 l, 150 l or 300 litre capacity

IMPORTANT: Tanks are designed for a working pressure of 6 bar max. Higher water pressures will demand the fitting of a pressure reduction valve.

Foul water:

Collected in plastic pipes (50 mm to 100 mm diam.) for discharge through the wall of the container into an authorised sewage network in accordance with local regulations governing disposal of foul water.

**13) HEATING AND VENTILATION:**

Heating by thermostatically controlled and/or temperature controlled electric radiators or electric fan heaters.

Mechanical air circulation via electric ventilators. Air conditioning can be supplied if required. Regular ventilation of the rooms has to be provided - a relative humidity of 70 % should not be exceeded.

**14) SITING AND ERECTION:**

Any individual container should always be mounted on either wooden or concrete foundation bearers (6 pcs 400 x 400 x 60 mm). The same applies to the combining of several MOBILBOX Room- Modules in a cluster where units must be positioned over concrete bearers or concrete slabs. Foundation parameters and frost depths would be subject to local demands and soil conditions. Level foundations are necessary for problem-free positioning and friction-free erection of any combination. For assembling please read the appropriate mounting instructions.

**15) HANDLING:**

With overhead rope, 60 ° (4 corners), forklift, container-lift.

Technical alterations reserved

**MOBILBOX LTD.**

ISO 9001



**DNV**

Tanúsított cég